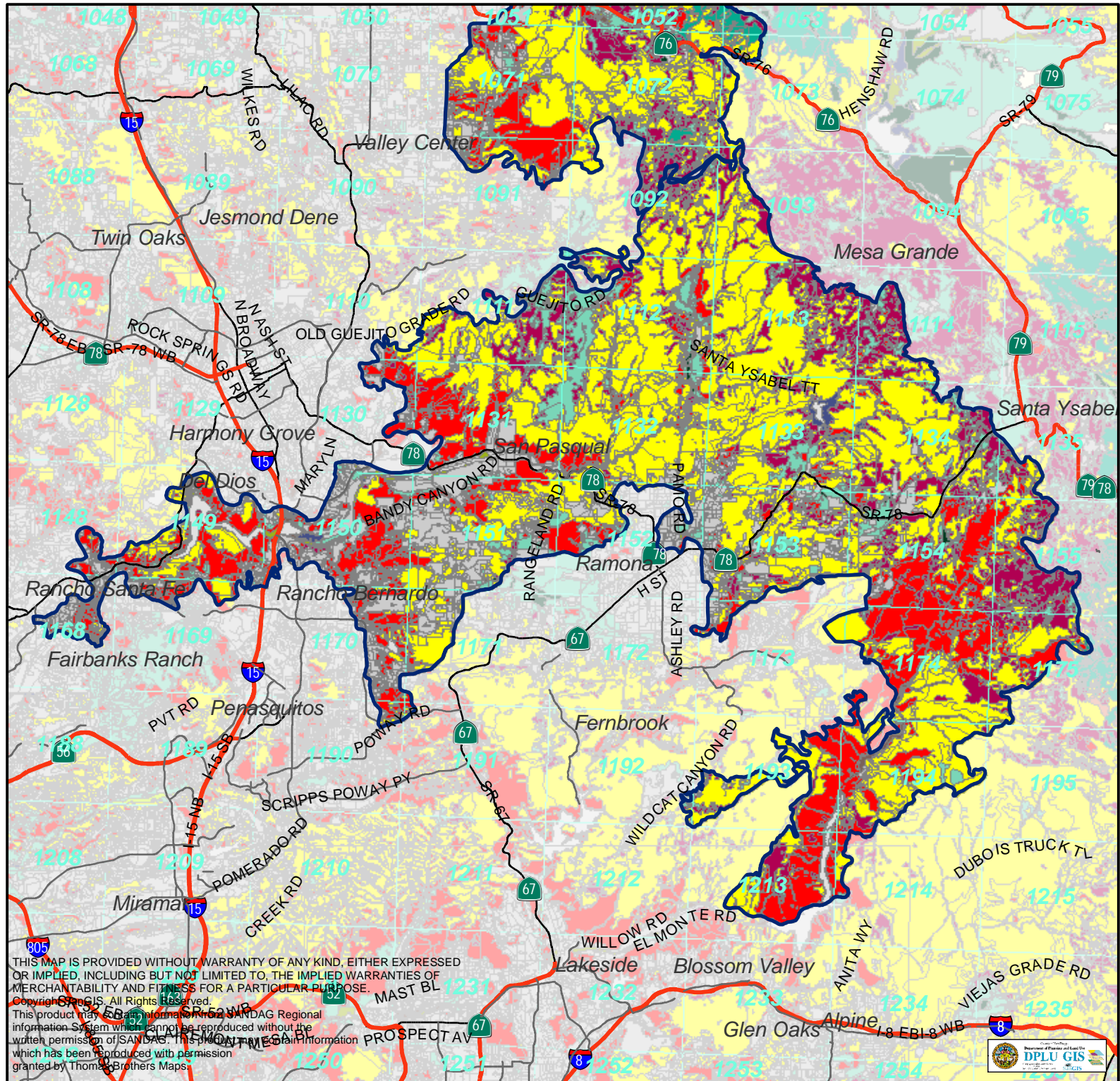
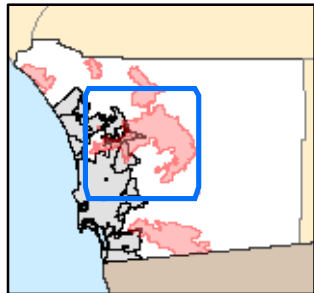
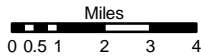


**VEGETATION IMPACTS
INCIDENT CA-MVU-010432
WITCH FIRE
10/31/2007 0600**

-  Fire Perimeter (071031)
- Vegetation Communities (Holland 95 Classification)**
- HOLLAND**
-  Southern Foredunes, Beach, Saltpan, Mudflats
-  Coastal Sage Scrub
-  Chaparral
-  Grassland
-  Riparian Scrub
-  Riparian Woodland
-  Riparian Forest
-  Pinyon Juniper Woodlands
-  Other Woodlands
-  Oak Forest
-  Meadow and Seep
-  Marsh
-  Coniferous Forest
-  Desert Dunes (22100, 22300)
-  Playas/Badlands/Mudhill Forbs
-  Desert Scrub
-  Desert Chaparral
-  Dry Wash Woodla
-  Water (Including 11200, 13200)
-  Urban, Disturbed Habitat, Agriculture, Eucalyptus Woodland
-  Not Mapped (data gaps)
-  Parcels
-  Thomas Bros. Grid Page
-  Highway



THIS MAP IS PROVIDED WITHOUT WARRANTY OF ANY KIND, EITHER EXPRESSED OR IMPLIED, INCLUDING BUT NOT LIMITED TO, THE IMPLIED WARRANTIES OF MERCHANTABILITY AND FITNESS FOR A PARTICULAR PURPOSE.
 Copyright © 2008 GIS. All Rights Reserved.
 This product may contain information from the SANDAG Regional Information System which cannot be reproduced without the written permission of SANDAG. This product may contain information which has been reproduced with permission granted by Thomas Brothers Maps.

