



**Warming and Earlier Spring Increase Western U.S.
Forest Wildfire Activity**

A. L. Westerling, *et al.*
Science **313**, 940 (2006);
DOI: 10.1126/science.1128834

***The following resources related to this article are available online at
www.sciencemag.org (this information is current as of October 22, 2007):***

Updated information and services, including high-resolution figures, can be found in the online version of this article at:

<http://www.sciencemag.org/cgi/content/full/313/5789/940>

Supporting Online Material can be found at:

<http://www.sciencemag.org/cgi/content/full/1128834/DC1>

A list of selected additional articles on the Science Web sites **related to this article** can be found at:

<http://www.sciencemag.org/cgi/content/full/313/5789/940#related-content>

This article **cites 30 articles**, 3 of which can be accessed for free:

<http://www.sciencemag.org/cgi/content/full/313/5789/940#otherarticles>

This article has been **cited by** 32 article(s) on the ISI Web of Science.

This article has been **cited by** 3 articles hosted by HighWire Press; see:

<http://www.sciencemag.org/cgi/content/full/313/5789/940#otherarticles>

This article appears in the following **subject collections**:

Atmospheric Science

<http://www.sciencemag.org/cgi/collection/atmos>

Information about obtaining **reprints** of this article or about obtaining **permission to reproduce this article** in whole or in part can be found at:

<http://www.sciencemag.org/about/permissions.dtl>

12. M. Gustafsson, L. Frommhold, *Astron. Astrophys.* **400**, 1161 (2003).
13. H. C. Harris *et al.*, *Astrophys. J.* **524**, 1000 (1999).
14. S. T. Hodgkin *et al.*, *Nature* **403**, 57 (2000).
15. B. R. Oppenheimer *et al.*, *Astrophys. J.* **550**, 448 (2001).
16. L. R. Bedin *et al.*, *Astrophys. J.* **624**, L45 (2005).
17. B. M. S. Hansen, *Phys. Rep.* **399**, 1 (2004).
18. I. N. Reid, J. E. Gizis, *Astron. J.* **116**, 2929 (1998).
19. R. G. Gratton *et al.*, *Astron. Astrophys.* **408**, 529 (2003).
20. S. K. Leggett, F. Allard, P. H. Hauschildt, *Astrophys. J.* **509**, 836 (1998).
21. S. Lepine, M. M. Shara, R. M. Rich, *Astrophys. J.* **602**, L125 (2004).
22. I. R. King, J. Anderson, A. M. Cool, G. Piotto, *Astrophys. J.* **492**, L37 (1998).
23. I. Baraffe, G. Chabrier, F. Allard, P. H. Hauschildt, *Astron. Astrophys.* **327**, 1054 (1997).
24. The models in (23) have been updated (available at <http://perso.ens-lyon.fr/isabelle.baraffe>).
25. G. Chabrier, I. Baraffe, *Annu. Rev. Astron. Astrophys.* **38**, 337 (2000).
26. Supported by NASA/HST grant GO-10424 (J.A., B.M.S.H., I.R.K., J.S.K., R.M.R., M.M.S.), a NASA Hubble Fellowship (J.S.K.), the U.S.-Canada Fulbright Fellowship Committee (H.B.R.), the Natural Sciences and Engineering Research Council of Canada (H.B.R.), and the University of British

Columbia. H.B.R. thanks I. Ozier for fruitful discussions on CIA, as well as UCLA for support during his extended visit during which most of this paper was written. This research is based on NASA/EESA Hubble Space Telescope observations obtained at the Space Telescope Science Institute, which is operated by the Association of Universities for Research in Astronomy Inc. under NASA contract NAS5-26555. These observations are associated with proposal GO-10424.

31 May 2006; accepted 18 July 2006
10.1126/science.1130691

Warming and Earlier Spring Increase Western U.S. Forest Wildfire Activity

A. L. Westerling,^{1,2*} H. G. Hidalgo,¹ D. R. Cayan,^{1,3} T. W. Swetnam⁴

Western United States forest wildfire activity is widely thought to have increased in recent decades, yet neither the extent of recent changes nor the degree to which climate may be driving regional changes in wildfire has been systematically documented. Much of the public and scientific discussion of changes in western United States wildfire has focused instead on the effects of 19th- and 20th-century land-use history. We compiled a comprehensive database of large wildfires in western United States forests since 1970 and compared it with hydroclimatic and land-surface data. Here, we show that large wildfire activity increased suddenly and markedly in the mid-1980s, with higher large-wildfire frequency, longer wildfire durations, and longer wildfire seasons. The greatest increases occurred in mid-elevation, Northern Rockies forests, where land-use histories have relatively little effect on fire risks and are strongly associated with increased spring and summer temperatures and an earlier spring snowmelt.

Wildfires have consumed increasing areas of western U.S. forests in recent years, and fire-fighting expenditures by federal land-management agencies now regularly exceed US\$1 billion/year (1). Hundreds of homes are burned annually by wildfires, and damages to natural resources are sometimes extreme and irreversible. Media reports of recent, very large wildfires (>100,000 ha) burning in western forests have garnered widespread public attention, and a recurrent perception of crisis has galvanized legislative and administrative action (1–3).

Extensive discussions within the fire-management and scientific communities and the media seek to explain these phenomena, focusing on either land-use history or climate as primary causes. If increased wildfire risks are driven primarily by land-use history, then ecological restoration and fuels management are potential solutions. However, if increased risks are largely due to changes in climate during recent decades, then restoration and fuels treatments may be relatively ineffective in reversing current wildfire trends (4, 5). We investigated

34 years of western U.S. (hereafter, “western”) wildfire history together with hydroclimatic data to determine where the largest increases in wildfire have occurred and to evaluate how recent climatic trends may have been important causal factors.

Competing explanations: Climate versus management. Land-use explanations for increased western wildfire note that extensive livestock grazing and increasingly effective fire suppression began in the late 19th and early 20th centuries, reducing the frequency of large surface fires (6–8). Forest regrowth after extensive logging beginning in the late 19th century, combined with an absence of extensive fires, promoted forest structure changes and biomass accumulation, which now reduce the effectiveness of fire suppression and increase the size of wildfires and total area burned (3, 5, 9). The effects of land-use history on forest structure and biomass accumulation are, however, highly dependent upon the “natural fire regime” for any particular forest type. For example, the effects of fire exclusion are thought to be profound in forests that previously sustained frequent, low-intensity surface fires [such as Southwestern ponderosa pine and Sierra Nevada mixed conifer (2, 3, 10, 11)], but of little or no consequence in forests that previously sustained only very infrequent, high-severity crown fires (such as Northern Rockies lodgepole pine or spruce-fir (1, 5, 12]).

In contrast, climatic explanations posit that increasing variability in moisture conditions (wet/dry oscillations promoting biomass growth, then burning), and/or a trend of increasing drought frequency, and/or warming temperatures have led to increased wildfire activity (13, 14). Documentary records and proxy reconstructions (primarily from tree rings) of fire history and climate provide evidence that western forest wildfire risks are strongly positively associated with drought concurrent with the summer fire season and (particularly in ponderosa pine-dominant forests) positively associated to a lesser extent with moist conditions in antecedent years (13–18). Variability in western climate related to the Pacific Decadal Oscillation and intense El Niño/La Niña events in recent decades along with severe droughts in 2000 and 2002 may have promoted greater forest wildfire risks in areas such as the Southwest, where precipitation anomalies are significantly influenced by patterns in Pacific sea surface temperature (19–22). Although corresponding decadal-scale variations and trends in climate and wildfire have been identified in paleo studies, there is a paucity of evidence for such associations in the 20th century.

We describe land-use history versus climate as competing explanations, but they may be complementary in some ways. In some forest types, past land uses have probably increased the sensitivity of current forest wildfire regimes to climatic variability through effects on the quantity, arrangement, and continuity of fuels. Hence, an increased incidence of large, high-severity fires may be due to a combination of extreme droughts and overabundant fuels in some forests. Climate, however, may still be the primary driver of forest wildfire risks on interannual to decadal scales. On decadal scales, climatic means and variability shape the character of the vegetation [e.g., species populations and their drought tolerance (23) and biomass (fuel) continuity (24), thus also affecting fire regime responses to shorter term climate variability]. On interannual and shorter time scales, climate variability affects the flammability of live and dead forest vegetation (13–19, 25).

High-quality time series are essential for evaluating wildfire risks, but for various reasons (26), previous works have not rigorously documented changes in large-wildfire frequency for

¹ Scripps Institution of Oceanography, La Jolla, CA 92093, USA. ² University of California, Merced, CA 95344, USA. ³ U.S. Geological Survey, La Jolla, CA 92093, USA. ⁴ Laboratory of Tree-Ring Research, University of Arizona, Tucson, AZ 85721, USA.

*To whom correspondence should be addressed. E-mail: awesterling@ucmerced.edu

western forests. Likewise, detailed fire-climate analyses for the region have not been conducted to evaluate what hydroclimatic variations may be associated with recent increased wildfire activity, and the spatial variations in these patterns.

We compiled a comprehensive time series of 1166 large (>400 ha) forest wildfires for 1970 to 2003 from federal land-management units containing 61% of western forested areas (and 80% above 1370 m) (26) (fig. S1). We compared these data with corresponding hydroclimatic and land surface variables (26–34) to address where and why the frequency of large forest wildfire has changed.

Increased forest wildfire activity. We found that the incidence of large wildfires in western forests increased in the mid-1980s (Fig. 1) [hereafter, “wildfires” refers to large-fire events (>400 ha) within forested areas only (26)]. Subsequently, wildfire frequency was nearly four times the average of 1970 to 1986, and the total area burned by these fires was more than six and a half times its previous level. Interannual variability in wildfire frequency is strongly associated with regional spring and summer temperature (Spearman’s correlation of 0.76, $P < 0.001$, $n = 34$). A second-order polynomial fit to the regional temperature signal alone explains 66% of the variance in the annual incidence of these fires, with many more wildfires burning in hotter than in cooler years.

The length of the wildfire season also increased in the 1980s (Fig. 1). The average season length (the time between the reported first wildfire discovery date and the last wildfire control date) increased by 78 days (64%), comparing 1970 to 1986 with 1987 to 2003. Roughly half of that increase was due to earlier ignitions, and half to later control (48% versus 52%, respectively). Later control dates were no doubt partly due to later ignition dates, given that the date of the last reported wildfire ignition increased by 15 days, but a substantial increase in the length of time the average wildfire burned also played a role. The average time between discovery and control for a wildfire increased from 7.5 days from 1970 to 1986 to 37.1 days from 1987 to 2003. The annual length of the fire season and the average time each fire burned were also moderately correlated with the regional spring and summer temperature (Spearman’s correlations of 0.61 ($P < 0.001$) and 0.55 ($P < 0.001$), respectively).

The greatest increase in wildfire frequency has been in the Northern Rockies, which account for 60% of the increase in large fires. Much of the remaining increase (18%) occurred in the Sierra Nevada, southern Cascades, and Coast Ranges of northern California and southern Oregon (“Northern California,” in fig. S2). The Pacific Southwest; the Southern Rockies; the Northwest; coastal, central, and southern California; and the Black Hills each account for 11%, 5%, 5%, <1%, and <1%, respectively. Interest-

ingly, the Northern Rockies and the Southwest show the same trend in wildfire frequency relative to their respective forested areas. However, the Southwest’s absolute contribution to the western regional total is limited by its smaller forested area relative to higher latitudes.

Increased wildfire frequency since the mid-1980s has been concentrated between 1680 and 2590 m in elevation, with the greatest increase centered around 2130 m. Wildfire activity at these elevations has been episodic, coming in pulses during warm years, with relatively little activity in cool years, and is strongly associated

with changes in spring snowmelt timing, which in turn is sensitive to changes in temperature.

Fire activity and the timing of the spring snowmelt. As a proxy for the timing of the spring snowmelt, we used Stewart and colleagues’ dates of the center of mass of annual flow (CT) for snowmelt-dominated streamflow gauge records in western North America (32–34). The annual wildfire frequency for the region is highly correlated (inversely) with CT at gauges across the U.S. Pacific Northwest and interior West, indicating a coherent regional signal of wildfire sensitivity to snowmelt timing (Fig. 2).

Fig. 1. (A) Annual frequency of large (>400 ha) western U.S. forest wildfires (bars) and mean March through August temperature for the western United States (line) (26, 30). Spearman’s rank correlation between the two series is 0.76 ($P < 0.001$). Wilcoxon test for change in mean large-forest fire frequency after 1987 was significant ($W = 42$; $P < 0.001$). (B) First principle component of center timing of streamflow in snowmelt dominated streams (line). Low (pink shading), middle (no shading), and high (light blue shading) tercile values indicate early, mid-, and late timing of spring snowmelt, respectively. (C) Annual time between first and last large-fire ignition, and last large-fire control.

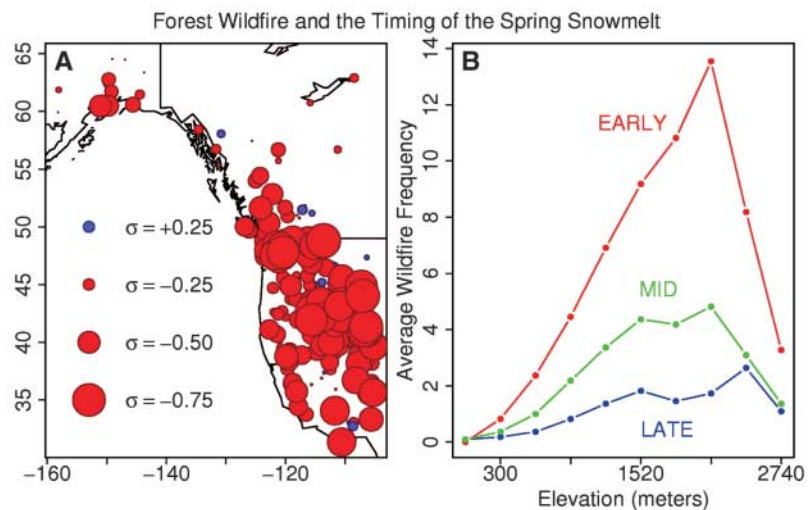
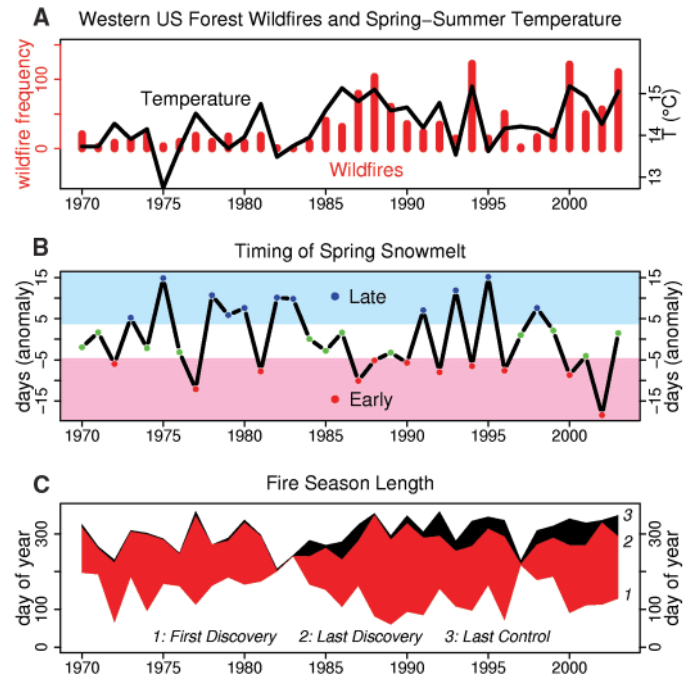


Fig. 2. (A) Pearson’s rank correlation between annual western U.S. large (>400 ha) forest wildfire frequency and streamflow center timing. x axis, longitude; y axis, latitude. (B) Average frequency of western U.S. forest wildfire by elevation and early, mid-, and late snowmelt years from 1970 to 2002. See Fig. 1B for a definition of early, mid-, and late snowmelt years.

The negative sign of these correlations indicates that earlier snowmelt dates correspond to increased wildfire frequency. Following Stewart *et al.*, we used the first principal component (CT1) of CT at western U.S. streamflow gauges as a regional proxy for interannual variability in the arrival of the spring snowmelt (Fig. 1) (26, 32). This signal had its greatest impact on wildfire frequency between elevations of 1680 and 2590 m (Fig. 2), with a nonlinear response at these elevations to variability in snowmelt timing. Overall, 56% of wildfires and 72% of area burned in wildfires occurred in early (i.e., lower tercile CT1) snowmelt years, whereas only 11% of wildfires and 4% of area burned occurred in late (i.e., upper tercile CT1) snowmelt years.

Temperature affects summer drought, and thus flammability of live and dead fuels in forests through its effect on evapotranspiration and, at higher elevations, on snow. Additionally, warm spring and summer temperatures were strongly associated with reduced winter precipitation over much of the western United States (Fig. 3). The arrival of spring snowmelt in the mountains of the western United States, represented here by CT1, is strongly associated with spring temperature (26). Average spring and summer temperatures throughout the entire region are significantly higher in early than in late years (Fig. 3), peaking in April. The average difference between early and late April mean monthly temperatures in forested areas was just over 2°C, and it increased with elevation.

Snow carries over a substantial portion of the winter precipitation that falls in western

mountains, releasing it more gradually in late spring and early summer, providing an important contribution to spring and summer soil moisture (35). An earlier snowmelt can lead to an earlier, longer dry season, providing greater opportunities for large fires due both to the longer period in which ignitions could potentially occur and to the greater drying of soils and vegetation. Consequently, it is not surprising that the incidence of wildfires is strongly associated with snowmelt timing.

Changes in spring and summer temperatures associated with an early spring snowmelt come in the context of a marked trend over the period of analysis. Regionally averaged spring and summer temperatures for 1987 to 2003 were 0.87°C higher than those for 1970 to 1986. Spring and summer temperatures for 1987 to 2003 were the warmest since the start of the record in 1895, with 6 years in the 90th percentile—the most for any 17-year period since the start of the record in 1895 through 2003—whereas only 1 year in the preceding 17 years ranked in the 90th percentile. Likewise, 73% of early years since 1970 occurred in 1987 to 2003 (Fig. 1).

Spatial variability in the wildfire response to an earlier spring. Vulnerability of western U.S. forests to more frequent wildfires due to warmer temperatures is a function of the spatial distribution of forest area and the sensitivity of the local water balance to changes in the timing of spring. We measured this sensitivity using the October-to-September moisture deficit—the cumulative difference between the potential evapotranspiration due to temperature and the

actual evapotranspiration constrained by available moisture—which is an important indicator of drought stress in plants (24). We used the percentage difference in the moisture deficit for early versus late snowmelt years scaled by the fraction of forest cover in each grid cell to map forests' vulnerability to changes in the timing of spring (Fig. 4) (26). The Northern Rockies and Northern California display the greatest vulnerability by this measure—the same forests accounting for more than three-quarters of increased wildfire frequency since the mid-1980s. Although the trend in temperature over the Northern Rockies increases with elevation, vulnerability in the Northern Rockies is highest around 2130 m, where the greatest increase in fires has occurred. At lower elevations, the moisture deficit in early years is increasing from a high average value (i.e., summer drought tends to be longer and more intense at lower elevations), whereas at higher elevations the longer dry season in early years is still relatively short, and vegetation is somewhat buffered from the effects of higher temperatures by the available moisture.

Discussion. Robust statistical associations between wildfire and hydroclimate in western forests indicate that increased wildfire activity over recent decades reflects sub-regional responses to changes in climate. Historical wildfire observations exhibit an abrupt transition in the mid-1980s from a regime of infrequent large wildfires of short (average of 1 week) duration to one with much more frequent and longer burning (5 weeks) fires. This transition was

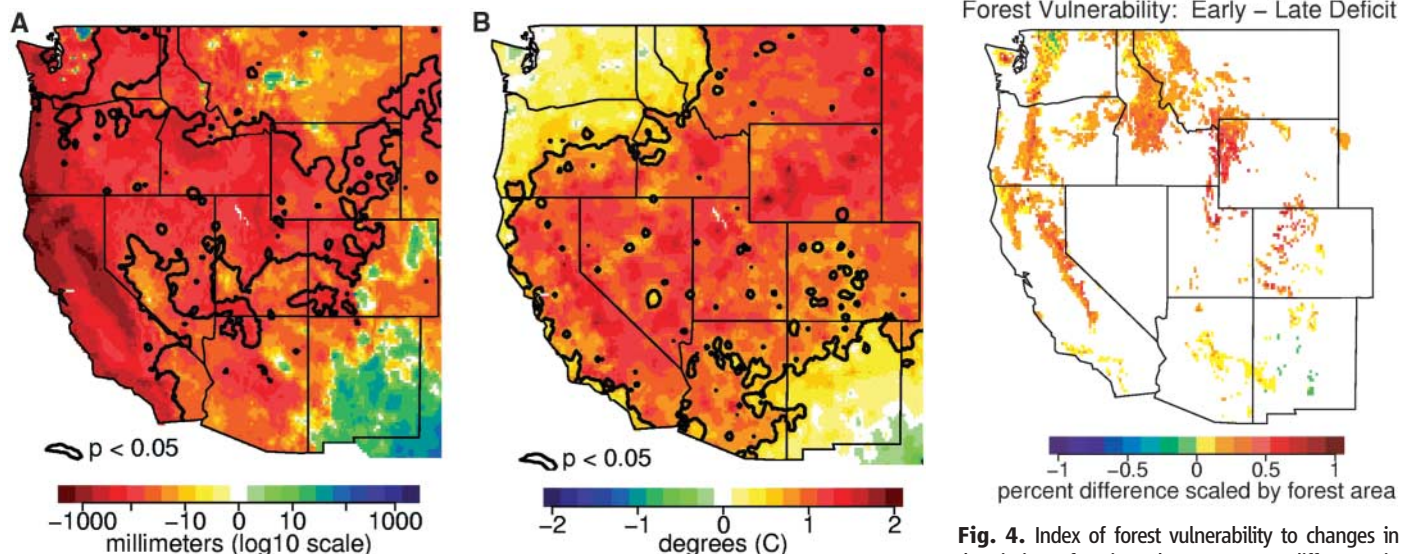


Fig. 3. Average difference between early and late snowmelt years in average precipitation from October through May (A) and average temperature from March through August (B). Contours enclose regions in which a *t* test for the difference in mean between 11 early and 11 late years was significant ($P < 0.05$). The null hypothesis that precipitation from October through May is normally distributed could not be rejected using the Shapiro-Wilk test for normality ($P > 0.05$ for more than 95% of 24,170 grid cells, $n = 49$ for precipitation; $P > 0.05$ for more than 95% of 24,170 grid cells, $n = 50$ for temperature). See Fig. 1B for a definition of early, mid-, and late snowmelt years.

Fig. 4. Index of forest vulnerability to changes in the timing of spring: the percentage difference in cumulative moisture deficit from October to August at each grid point in early versus late snowmelt years, scaled by the forest-type vegetation fraction at each grid point, for 1970 to 1999 (26). See Fig. 53 for a map of forest vulnerability for 1970 to 2003 over a smaller spatial domain. See Fig. 1B for a definition of early, mid-, and late snowmelt years.

marked by a shift toward unusually warm springs, longer summer dry seasons, drier vegetation (which provoked more and longer burning large wildfires), and longer fire seasons. Reduced winter precipitation and an early spring snowmelt played a role in this shift. Increases in wildfire were particularly strong in mid-elevation forests.

The greatest absolute increase in large wildfires occurred in Northern Rockies forests. This sub-region harbors a relatively large area of mesic, middle and high elevation forest types (such as lodgepole pine and spruce-fir) where fire exclusion has had little impact on natural fire regimes (1, 5), but where we found that an advance in spring produces a relatively large percentage increase in cumulative moisture deficit by midsummer. In contrast, changes in Northern California forests may involve both climate and land-use effects. In these forests, large percentage changes in moisture deficits were strongly associated with advances in the timing of spring, and this area also includes substantial forested area where fire exclusion, timber harvesting, and succession after mining activities have led to increased forest densities and fire risks (10, 11). Northern California forests have had substantially increased wildfire activity, with most wildfires occurring in early years. Southwest forests, where fire exclusion has had the greatest effect on fire risks (2, 3), have also experienced increased numbers of large wildfires, but the relatively small forest area there limits the impact on the regional total, and the trend appears to be less affected by changes in the timing of spring. Most wildfires in the Southern Rockies and Southern California have also occurred in early snowmelt years, but again forest area there is small relative to the Northern Rockies and Northern California. Thus, although land-use history is an important factor for wildfire risks in specific forest types (such as some ponderosa pine and mixed conifer forests), the broad-scale increase in wildfire frequency across the western United States has been driven primarily by sensitivity of fire regimes to recent changes in climate over a relatively large area.

The overall importance of climate in wildfire activity underscores the urgency of ecological restoration and fuels management to reduce wildfire hazards to human communities and to mitigate ecological impacts of climate change in forests that have undergone substantial alterations due to past land uses. At the same time, however, large increases in wildfire driven by increased temperatures and earlier spring snowmelts in forests where land-use history had little impact on fire risks indicates that ecological restoration and fuels management alone will not be sufficient to reverse current wildfire trends.

These results have important regional and global implications. Whether the changes observed in western hydroclimate and wildfire are

the result of greenhouse gas-induced global warming or only an unusual natural fluctuation is beyond the scope of this work. Regardless of past trends, virtually all climate-model projections indicate that warmer springs and summers will occur over the region in coming decades. These trends will reinforce the tendency toward early spring snowmelt (36, 37) and longer fire seasons. This will accentuate conditions favorable to the occurrence of large wildfires, amplifying the vulnerability the region has experienced since the mid-1980s. The Intergovernmental Panel on Climate Change's consensus range of 1.5° to 5.8°C projected global surface temperature warming by the end of the 21st century is considerably larger than the recent warming of less than 0.9°C observed in spring and summer during recent decades over the western region (37).

If the average length and intensity of summer drought increases in the Northern Rockies and mountains elsewhere in the western United States, an increased frequency of large wildfires will lead to changes in forest composition and reduced tree densities, thus affecting carbon pools. Current estimates indicate that western U.S. forests are responsible for 20 to 40% of total U.S. carbon sequestration (38, 39). If wildfire trends continue, at least initially, this biomass burning will result in carbon release, suggesting that the forests of the western United States may become a source of increased atmospheric carbon dioxide rather than a sink, even under a relatively modest temperature-increase scenario (38, 39). Moreover, a recent study has shown that warmer, longer growing seasons lead to reduced CO₂ uptake in high-elevation forests, particularly during droughts (40). Hence, the projected regional warming and consequent increase in wildfire activity in the western United States is likely to magnify the threats to human communities and ecosystems, and substantially increase the management challenges in restoring forests and reducing greenhouse gas emissions.

References and Notes

1. C. Whitlock, *Nature* **432**, 28 (2004).
2. W. W. Covington, *Nature* **408**, 135 (2000).
3. C. D. Allen *et al.*, *Ecol. Appl.* **12**, 1418 (2002).
4. J. L. Pierce, G. A. Meyer, A. J. T. Jull, *Nature* **432**, 87 (2004).
5. T. Schoennagel, T. T. Veblen, W. H. Romme, *BioScience* **54**, 661 (2004).
6. M. Savage, T. W. Swetnam, *Ecology* **71**, 2374 (1990).
7. A. J. Belsky, D. M. Blumenthal, *Conserv. Biol.* **11**, 315 (1997).
8. S. J. Pyne, P. L. Andrews, R. D. Laven, *Introduction to Wildland Fire* (Wiley, New York, 1996).
9. W. W. Covington, M. M. Moore, *J. For.* **92**, 39 (1994).
10. K. S. McKelvey *et al.*, in *Sierra Nevada Ecosystems Project: Final Report to Congress* (Univ. of California, Davis, CA, 1996), vol. 2, chap. 37.
11. G. E. Gruell, *Fire in Sierra Nevada Forests: A Photographic Interpretation of Ecological Change Since 1849* (Mountain Press, Missoula, MT, 2001).
12. T. Schoennagel, T. T. Veblen, W. H. Romme, J. S. Sibold, E. R. Cook, *Ecol. Appl.* **15**, 2000 (2005).

13. R. C. Balling, G. A. Meyer, S. G. Wells, *Agric. For. Meteorol.* **60**, 285 (1992).
14. E. K. Heyerdahl, L. B. Brubaker, J. K. Agee, *Holocene* **12**, 597 (2002).
15. K. F. Kipfmüller, T. W. Swetnam, in *Wilderness Ecosystems, Threats, and Management*, D. N. Cole, S. F. McCool, W. T. Borrie, J. O'Loughlin, Eds. (U.S. Forest Service, RMRS-P-15, Fort Collins, CO, 2000), vol. 5, pp. 270–275.
16. T. W. Swetnam, J. L. Betancourt, *J. Clim.* **11**, 3128 (1998).
17. T. T. Veblen, T. Kitzberger, J. Donnegan, *Ecol. Appl.* **10**, 1178 (2000).
18. A. L. Westerling, T. J. Brown, A. Gershunov, D. R. Cayan, M. D. Dettinger, *Bull. Am. Meteorol. Soc.* **84**, 595 (2003).
19. T. W. Swetnam, J. L. Betancourt, *Science* **249**, 1017 (1990).
20. A. Gershunov, T. P. Barnett, *J. Clim.* **11**, 1575 (1998).
21. A. Gershunov, T. P. Barnett, D. R. Cayan, *Eos* **80**, 25 (1999).
22. A. L. Westerling, T. W. Swetnam, *Eos* **84**, 545 (2003).
23. N. L. Stephenson, *Am. Nat.* **135**, 649 (1990).
24. N. L. Stephenson, *J. Biogeogr.* **25**, 855 (1998).
25. T. W. Swetnam, *Science* **262**, 885 (1993).
26. Materials and methods are available as supporting material on Science Online.
27. K. E. Mitchell *et al.*, *J. Geophys. Res.* **109**, D07590 (2004).
28. E. P. Maurer, A. W. Wood, J. C. Adam, D. P. Lettenmaier, B. Nijssen, *J. Clim.* **15**, 3237 (2002).
29. A. F. Hamlet, D. P. Lettenmaier, *J. Hydrometeorol.* **6**, 330 (2005).
30. NCDC, "Time bias corrected divisional temperature-precipitation-drought index," documentation for data set TD-9640 (DBMB, NCDC, NOAA, Asheville, NC, 1994); available online (www.ncdc.noaa.gov/oa/climate/onlineprod/drought/readme.html).
31. X. Liang, D. P. Lettenmaier, E. F. Wood, S. J. Burges, *J. Geophys. Res.* **99**, 14415 (1994).
32. I. T. Stewart, D. R. Cayan, M. D. Dettinger, *J. Clim.* **18**, 1136 (2005).
33. D. R. Cayan, S. A. Kammerdiener, M. D. Dettinger, J. M. Caprio, D. H. Peterson, *Bull. Am. Meteorol. Soc.* **82**, 399 (2001).
34. J. R. Slack, J. M. Landwehr, *U.S. Geol. Surv. Open-File Rep.* **92-129** (1992).
35. J. Sheffield, G. Goteti, F. H. Wen, E. F. Wood, *J. Geophys. Res.* **109**, D24108 (2004).
36. National Assessment Synthesis Team, *Climate Change Impacts on the United States: The Potential Consequences of Climate Variability and Change* (U.S. Global Change Research Program, Washington, DC, 2000).
37. J. T. Houghton *et al.*, Eds., *IPCC Climate Change 2001: The Scientific Basis* (Cambridge Univ. Press, Cambridge and New York, 2001).
38. S. W. Pacala *et al.*, *Science* **292**, 2316 (2001).
39. D. Schimel, B. H. Braswell, in *Global Change and Mountain Regions: An Overview of Current Knowledge*, U. M. Huber, H. K. M. Bugmann, M. A. Reasoner, Eds., vol. 23 of *Advances in Global Change Research* (Springer, Dordrecht, Netherlands, 2005), pp. 449–456.
40. W. Sacks, D. Schimel, R. Monson, *Oecologia*, in press.
41. We thank M. Dettinger and D. Schimel for help. This work was supported by grants from the National Oceanographic and Atmospheric Administration's Office of Global Programs, the National Fire Plan by means of the U.S. Forest Service's Southern Research Station, and the California Energy Commission.

Supporting Online Material

www.sciencemag.org/cgi/content/full/1128834/DC1
Materials and Methods
Figs. S1 to S3
References

17 April 2006; accepted 28 June 2006
Published online 6 July 2006;
10.1126/science.1128834
Include this information when citing this paper.